

Little Giant[®]

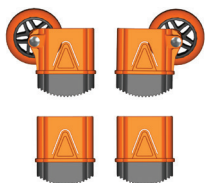
Ladder Systems

SNAP-ON FOOT REPLACEMENT

READ THESE INSTRUCTIONS COMPLETELY BEFORE YOU START. IF YOU DON'T UNDERSTAND THESE INSTRUCTIONS, PLEASE CALL 800-453-1192 FOR ASSISTANCE

1. Failure to comply with all instructions may result in serious injury.
2. Make sure this kit is compatible with your ladder. Before installing this kit, identify all kit components. If any components are missing, damaged or if you have any questions concerning the use of this kit on Little Giant Ladder Systems[®] products, please contact our Customer Experience Team at 800-453-1192. Do not substitute any components.
3. Inspect the ladder before installing this kit. Repair or replace any damaged or missing parts before using the ladder. Use only Little Giant Ladder Systems[®] replacement parts. If you are unable to repair it, discard the ladder.

COMPONENTS INCLUDED



SNAP-ON FEET
(QUANTITY AND TYPE OF FEET WILL VARY
DEPENDING ON YOUR LADDER)



WHEEL WARNING LABEL [2]
(INCLUDED IN KITS WITH WHEELED FEET)

TOOLS REQUIRED

TOOLS USED VARY DEPENDING ON LADDER MODEL



**FLAT-HEAD
SCREWDRIVER**



**DRILL WITH
3/16" & 1/2" BIT**



HAMMER



SCISSORS



CENTER PUNCH



TAPE



CHISEL



**SAFETY
GLASSES**



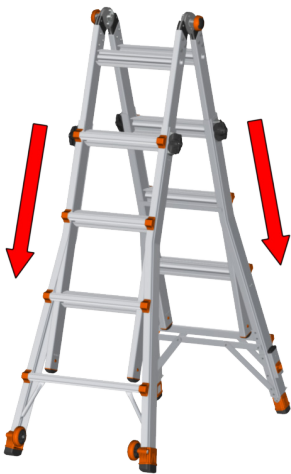
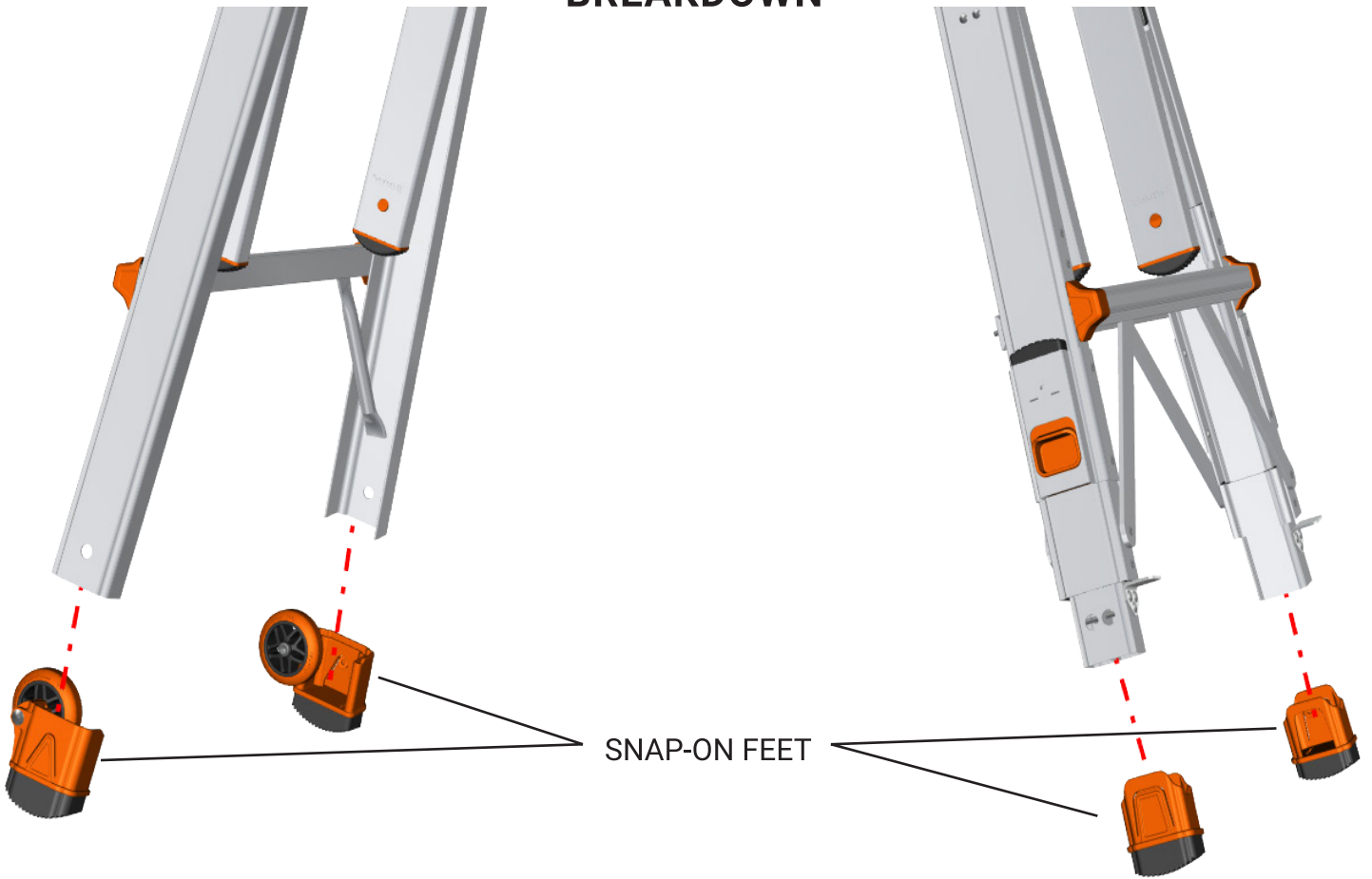
3/16" PUNCH

NOTE: IF ANY OTHER PART OF THE LADDER IS DAMAGED BEFORE OR DURING THE PROCESS OF INSTALLING AND/OR REPAIRING, Please contact our customer experience team for assistance at 800-453-1192.

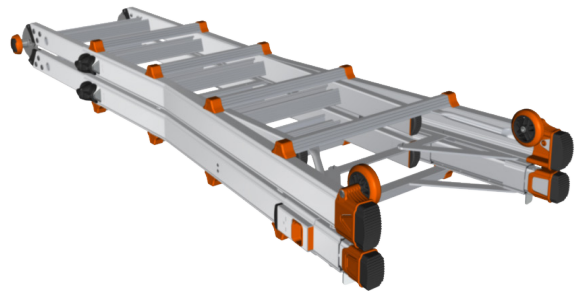
DO NOT USE A DAMAGED LADDER!

57798 v7 10.22 (1)

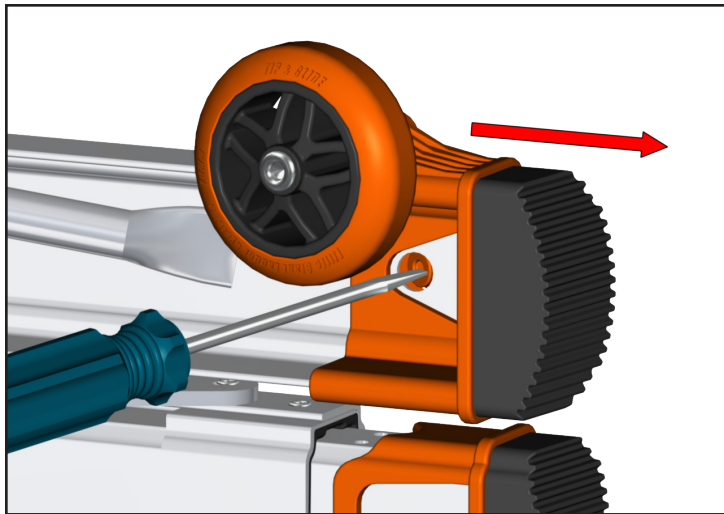
BREAKDOWN



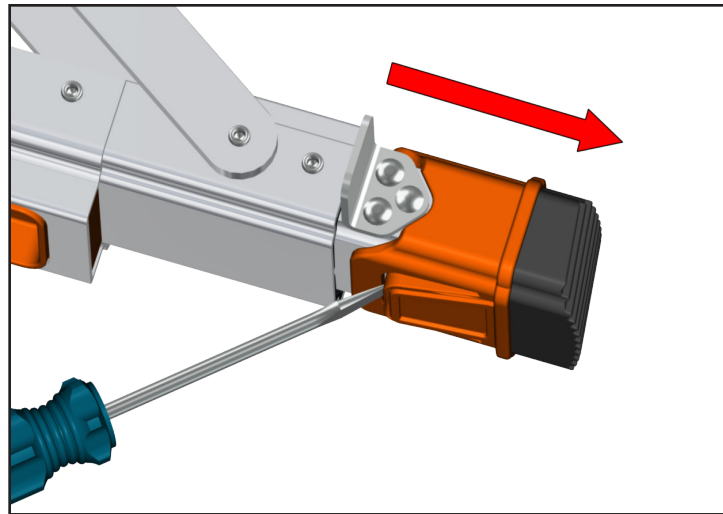
1. Extend the outer sections one rung down.



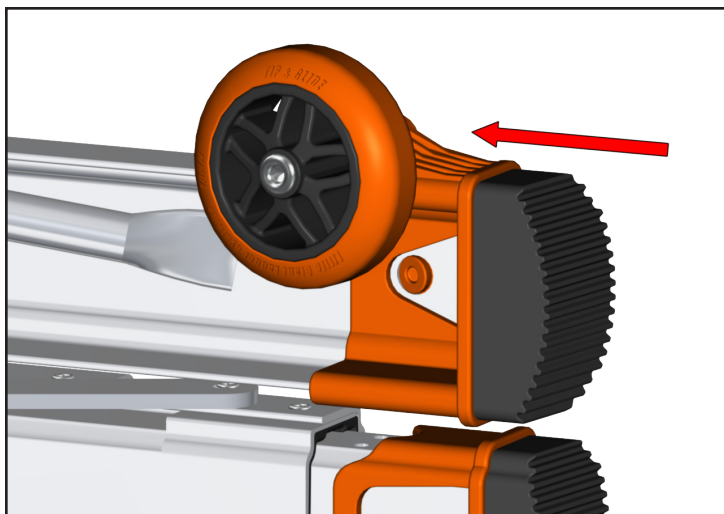
2. Close and lay the ladder down. If your ladder has riveted feet skip to step 7.



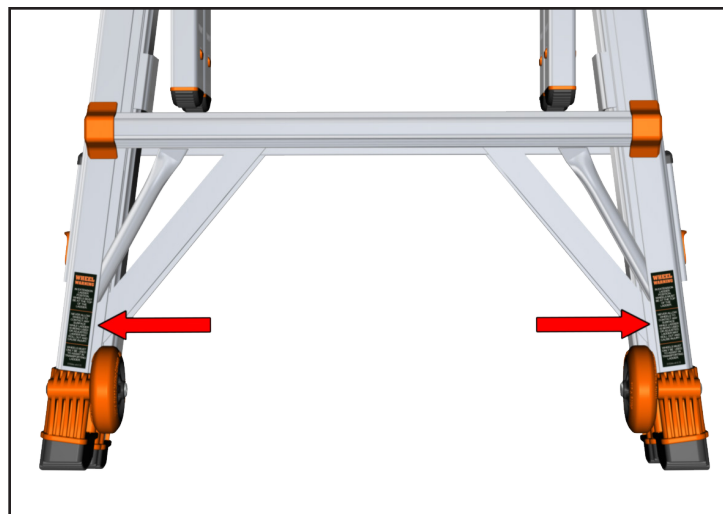
3. While using a screwdriver to push out on the tabs securing the feet, pull off all four feet and discard. If ladder has Ratchet™ Levelers only remove and discard the feet with wheels.



4. If applicable, extend out the Ratchet™ Leveler legs. While prying out on the tabs securing the feet with a flat-head screwdriver, pull off the feet and discard.

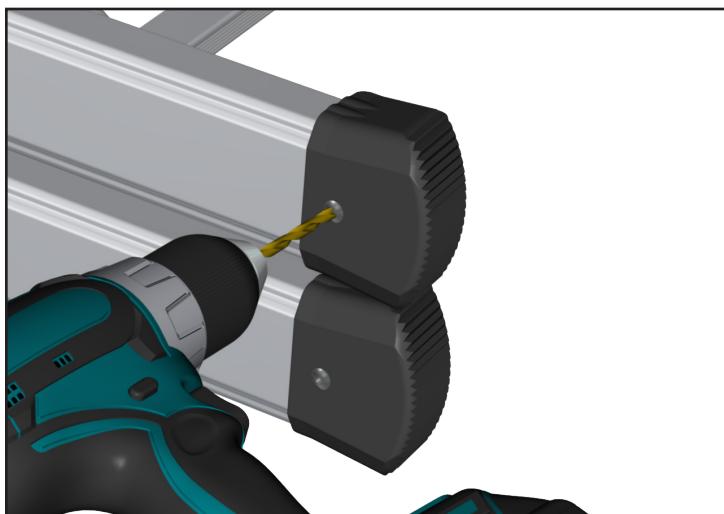


5. Slide the new feet onto the rail until the tabs snap in place. If your ladder has wheels, make sure the wheels are facing outward.

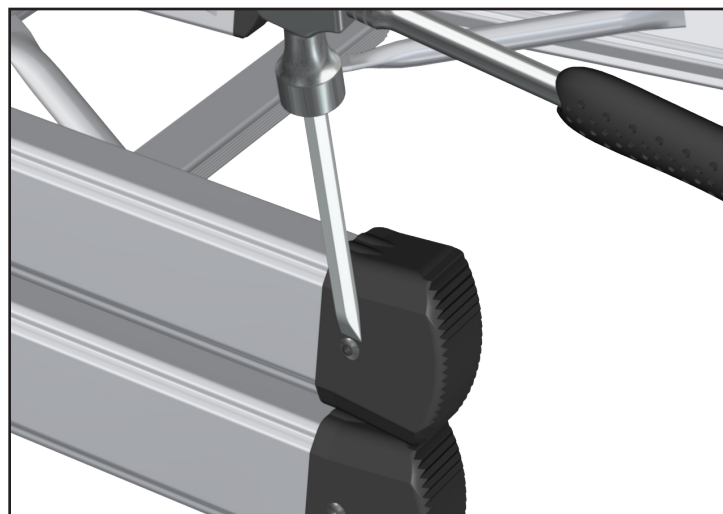


6. If your ladder has wheels, apply the wheel warning labels above both the wheeled feet as shown. Confirm all feet are secure before use.

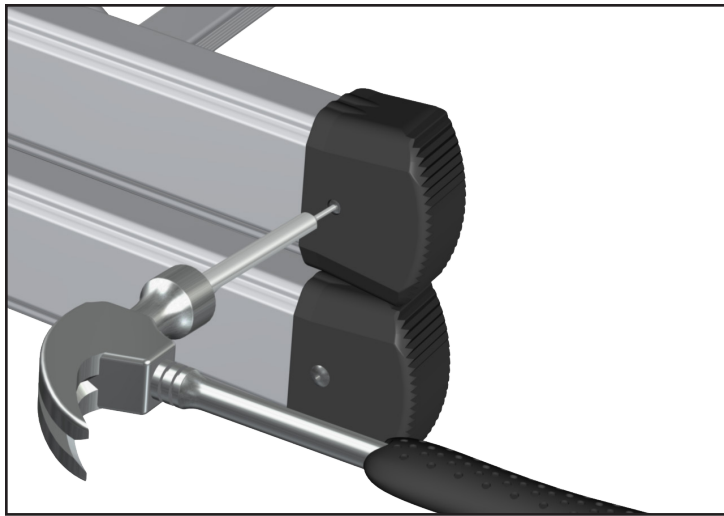
RIVETED FOOT REPLACEMENT



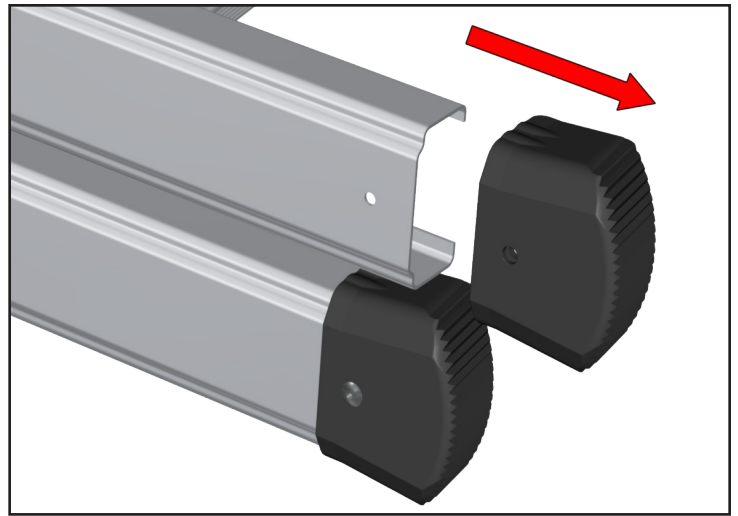
7. Using a 3/16" bit, drill through the head of the rivet.



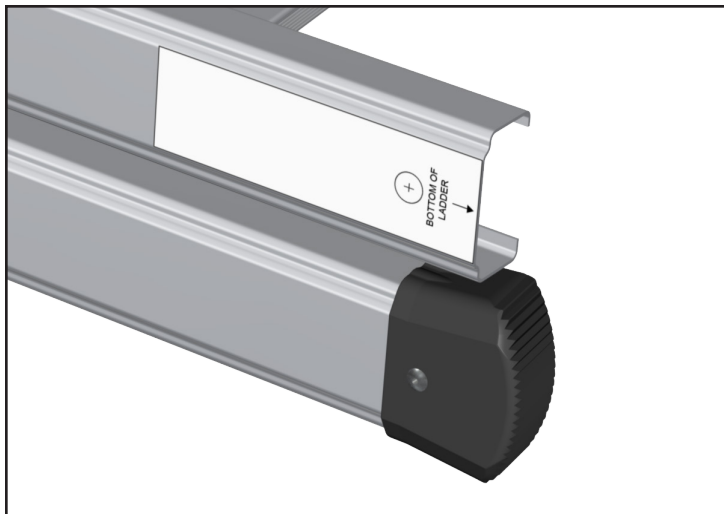
8. Chisel off any remaining rivet head material.



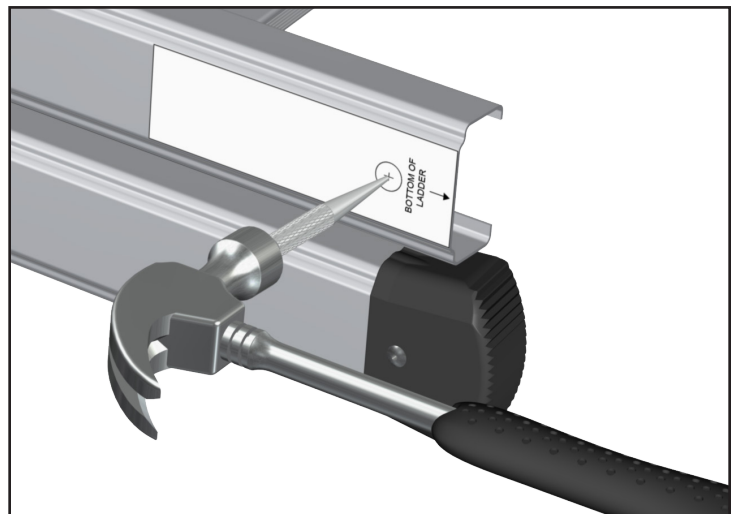
9. Use a 3/16" punch to tap the rivet completely out.



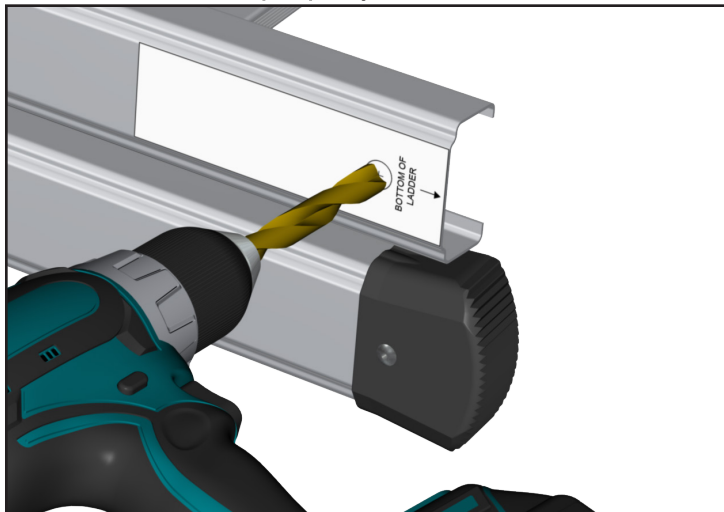
10. Slide off and discard the old foot.



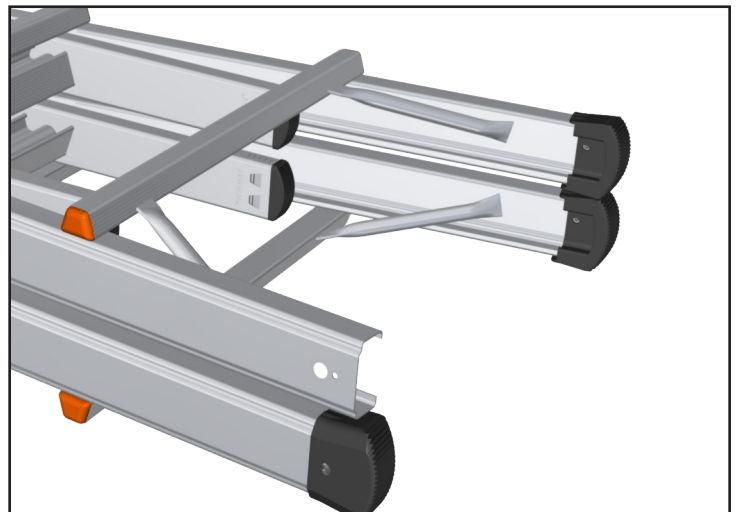
11. Cut out the template for your ladder on page 5 or 6, then tape in place, keeping it centered and flush to the end of the rail. Correct position and alignment of the template is critical for the new feet to function properly.



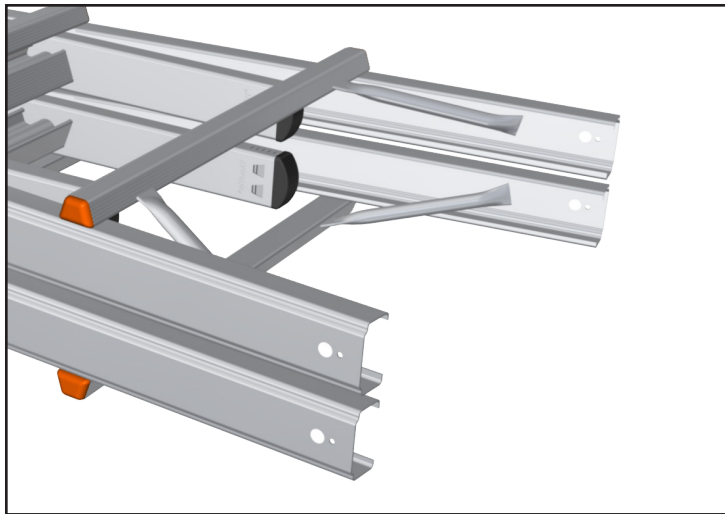
12. To keep the drill bit from wandering, use a center punch to indent the aluminum, as indicated by the template.



13. Using a 1/2" drill bit, drill completely through the rail, as indicated by the template.



14. Repeat steps 7-13 on the remaining feet.



15. Once all the holes have been drilled, follow steps 5 and 6 to complete the installation.

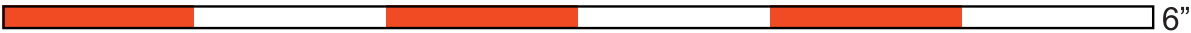
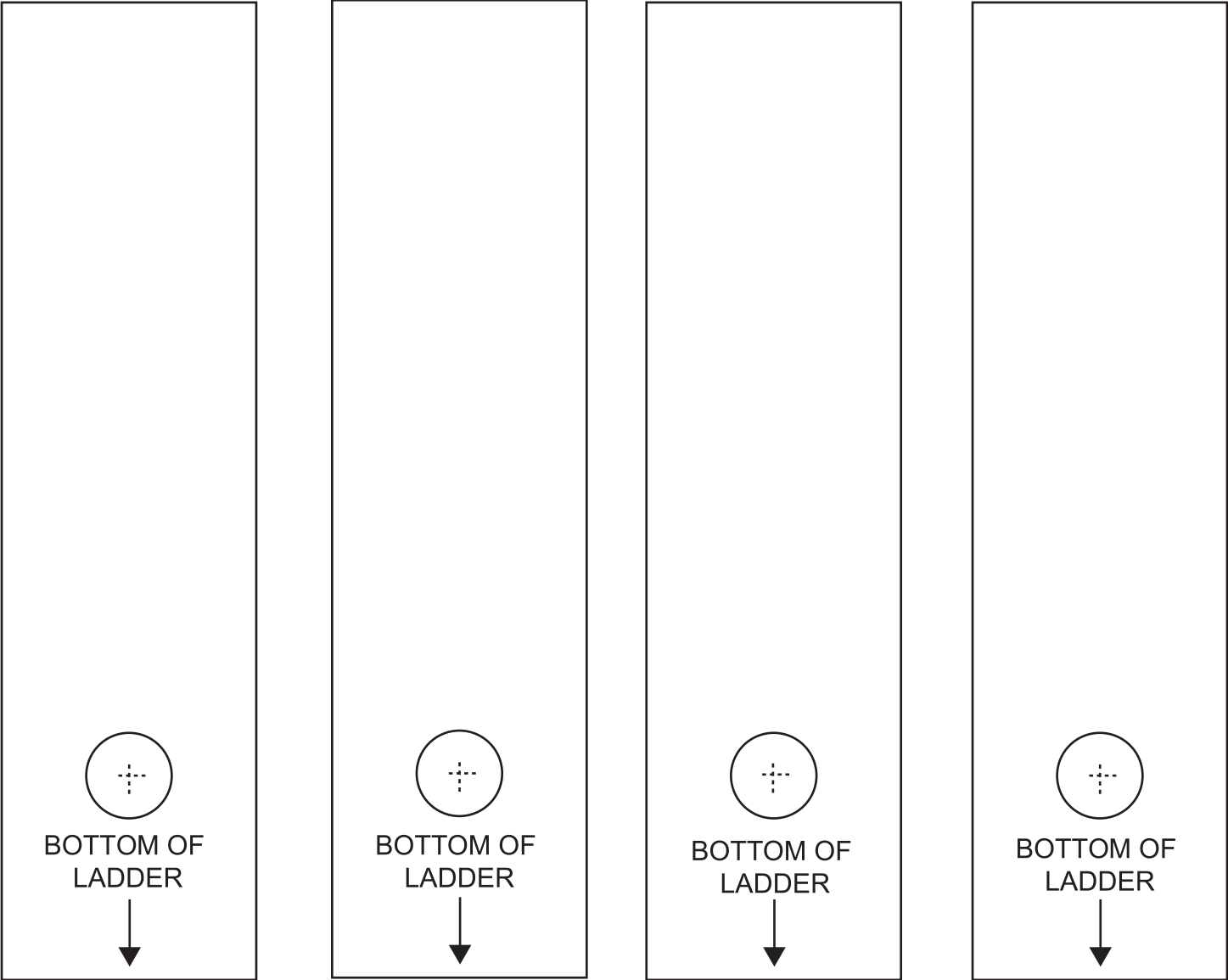
Little Giant Ladder Systems, LLC
1198 North Spring Creek Place
Springville, UT, 84663, USA

Toll Free: 800-453-1192
Phone: 801-489-3684
Fax: 801-489-3685

www.LittleGiantLadders.com

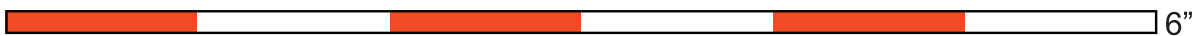
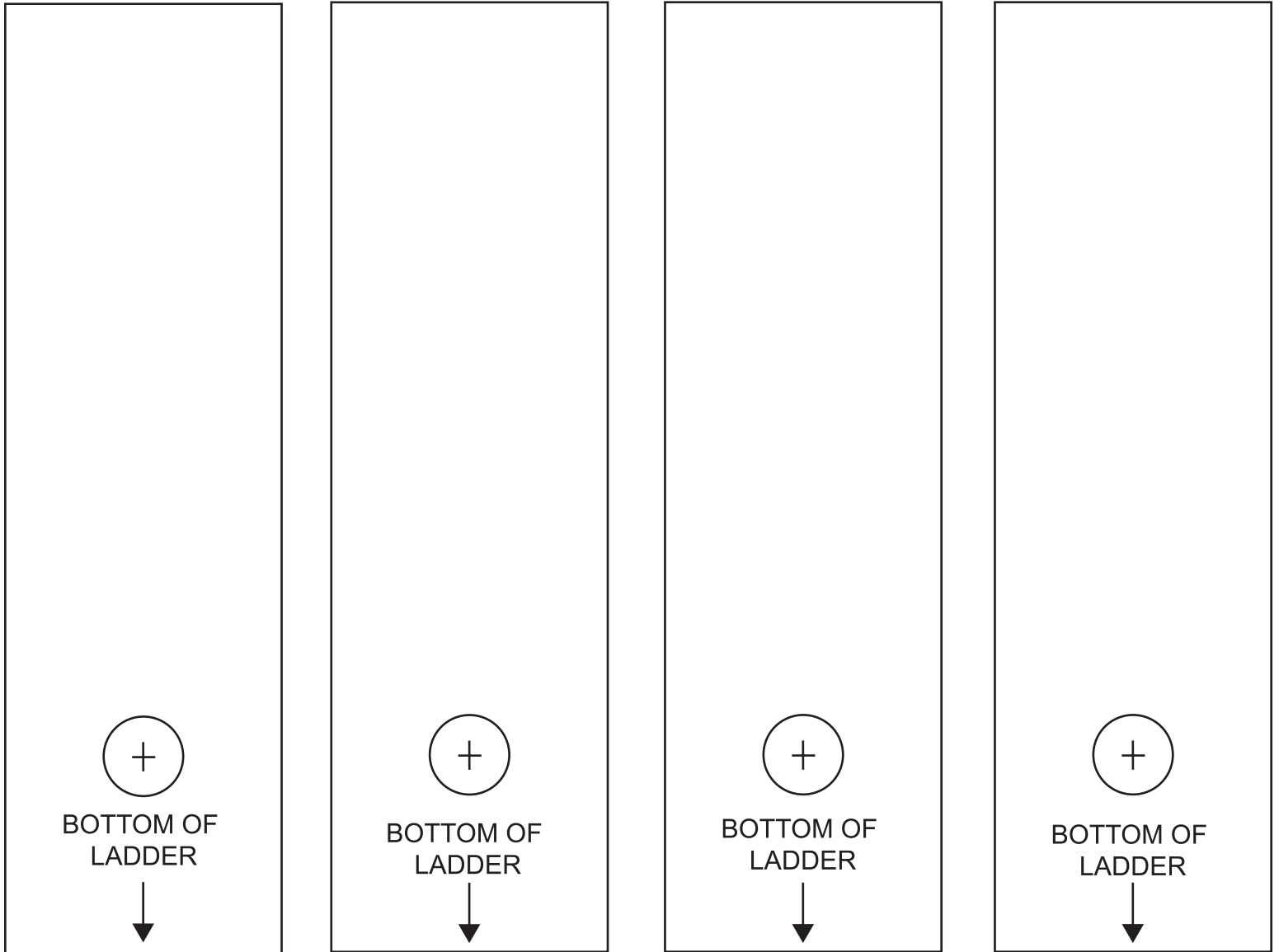
57798 v7 10.22 (5)

Templates for all ladders except Revolution™



Measure to confirm templates are printed to scale

Templates for Revolution™ ladder



Measure to confirm templates are printed to scale